

## **Historic, Archive Document**

Do not assume content reflects current scientific knowledge, policies, or practices.





62.91  
c 12743



FRUIT TREES

ROSE BUSHES

OLYMPIC BERRIES

RASPBERRIES

FIGS

BULBS



POSTMASTER: If undeliverable FOR ANY REASON, notify sender, stating reason, on Form 3547, postage for which is guaranteed.

LIBRARY  
★ FEB 21 1944 ★  
U. S. DEPARTMENT OF AGRICULTURE

Sec. 562, P.L.&R.  
U.S. POSTAGE  
**PAID**  
La Conner, Wash.  
Permit No. 2

*Miss Newman  
Dept Librarian*

~~U.S. Dept. of Agriculture  
Bureau of Plant Industry  
Fruit & Vegetable Crops  
& Diseases  
Washington, D. C.~~

**PUGET SOUND SEED CO.—NURSERY DEPT.**  
*In the Heart of the Seed Growing District • LA CONNER, WASH.*



PUGET SOUND SEED CO.

NURSERY PLANT DEPARTMENT

Since it may not be so convenient for you to go shopping for your garden plants this season, we have had Mr. Cecil Solly select, where possible in the State of Washington, trees and plants of exceptional quality and vitality, grown for us by the best nurserymen.

NOTE that all orders will be shipped from La Conner or direct from the grower from our selected plants. All prices include proper packing for safe delivery and mailing charges. Be sure to include the 3% sales tax —without which your order might be delayed.

BOOKS BY CECIL SOLLY

These books were written with the express purpose of helping you to obtain the best results possible with any plants or trees you set out, in this district. By following the instructions on planting and after care, you take no chance of failure or disappointment.



GROWING VEGETABLES

This is the only book that has been written expressly for the climate and conditions of the Pacific Northwest area. One hundred twenty-eight pages of practical information for both the amateur and the experienced gardener... How to Grow, Sorts to Use, Control of Pests and Diseases, Hotbeds, Coldframes, and How to Get the Most from the Land Available. Price \$1.00.

FRUIT TREES . . . . . 25c

How to plant and care for fruit trees in any garden. Lists best varieties.

BERRIES . . . . . 25c

Growing berries in the home garden is easy and produces heavy crops.

LAWN . . . . . 25c

How to plant and care for a lawn of perfect turf here.

ROSES . . . . . 25c

Roses are easy to grow, provided you start right.

# SEEDS FOR THE EARLY BUYER

FLOWER AND VEGETABLE SEEDS FOR GIFTS OR FOR THE EARLY BUYER WHO MAY HAVE HAD TO WAIT IN LINE OR GO WITHOUT THE BEST KINDS LAST SPRING.

---

## SMALL OR BACKYARD SEED COLLECTION

Where only a small area is available for a vegetable garden, the following dozen packets are first choice. **One 10c packet each of the following:** LAXTON'S SUPERB Peas, STRINGLESS GREEN-POD Beans, GOLDEN BANTAM Corn, RED-CORED CHANTENAY Carrot, CRISP NEW YORK Lettuce, TENDERSWEET Radish, LUCULLUS Swiss Chard, DELICIOUS Squash, RED BALL Beet, NOBEL Spinach, STRAIGHT EIGHT Cucumber, and SCARLET DAWN Tomato.

**12 Full Size Packages for Only \$1.00**

---

## HOME GARDEN VEGETABLE COLLECTION

A balanced selection of necessary vegetables for a garden about 30x50 feet. Twenty-five full 10c-size packets for \$2.00. **One each of the following:** PEAS: Laxton's Superb and Dwarf Telephone; BEANS: Stringless Green Pod and Blue Lake Pole; CORN: Golden Bantam; BEETS: Red Ball and Early Wonder; CARROT: Red-cored Chantenay and Tendersweet; CUCUMBER: Straight Eight; LETTUCE: Crisp New York and Grand Rapids; ONION: Yellow Danvers; PARSLEY: Hamberg or Turnip-rooted; PUMPKIN: Sugar Pie; RADISH: Tender-sweet and Sparkler; CELERIAC or Root Celery; RUTABAGA: Tipperary; SPINACH: Nobel; SQUASH: Delicious and Zucchini; SWISS CHARD: Lucullus; TOMATO: Scarlet Dawn; TURNIP: Alaska.

**Twenty-five 10c Packages for \$2.00**

---

## SWEET PEA SEEDS

### COLLECTION No. 1

RED BOY—Red.  
SEXTET QUEEN—White.  
AMETHYST—Blue.  
**Three 10c Pkgs. 25c Postpaid**

### COLLECTION No. 2

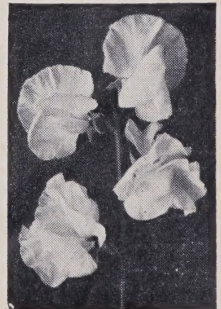
TANGERINE IMP.—Orange.  
SEXTET QUEEN—White.  
FORTUNE—Blue.  
SYBIL HENSHAW — Crim-  
son.  
PINKIE—Rose pink.  
AUSTIN FREDERICK—  
Lavender.  
**Six 10c Pkgs. 49c Postpaid**

### COLLECTION No. 3

Eleven Selected Varieties in  
a Wide Color Range  
Eleven 10c Pkgs.  
**85c Postpaid**

### SWEET PEA SEED MIXTURE

of Finest Ruffled Varieties  
in Fine Blend of Colors  
**Lge. Pkg. 15c; 1 Oz. 30c  
Postpaid**





# DARWIN TULIPS

The eight named tulips listed below are among the most striking of the Darwin Tulips. They are a credit to any garden.

## ALLARD PIERSON

A rich deep crimson-maroon of fine stature and proud carriage. An excellent variety for early forcing, keeping its deep color even when grown under glass. 30 inches.

## BARONNE DE LA TONNAYE

Good sized flowers somewhat egg-shaped, with the petals turning inward at the tips. Rich bright rose in color, turning to blush-rose at the edges. Of even height, and therefore unexcelled for border use. 26 inches.

## CLARA BUTT

A delightful favorite that will never fade, and which should be in every garden. No other tulip has quite the same pure soft salmon-pink color unmarred by any other tone. 22 inches.

## INGLESCOMBE YELLOW

Deep canary-yellow blooms, unmarked with any other color when first open. As they age they become flushed with scarlet at the edges, creating a lovely two-toned effect. 22 inches.

## PRIDE OF HAARLEM

Immense flowers of brilliant deep rose, shaded scarlet, with a deep blue base. Much admired for its huge size and bright color. 28 inches.

## WILLIAM COPELAND

Used extensively for indoor forcing, and blooming a soft pink when so grown. Outdoors, this fine tulip deepens to dark rose, almost plum-pink. A lovely variety for cut flowers. 24 inches.

## ORANGE KING (Cottage)

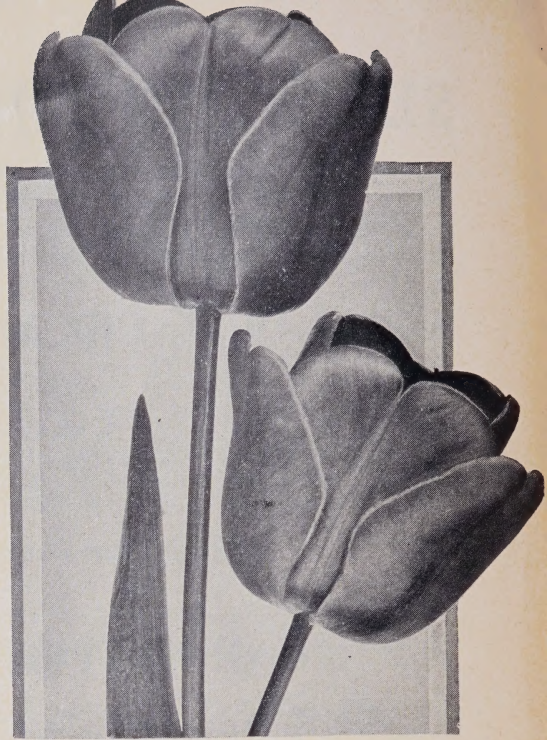
Deep orange with reddish cast. Very popular.

## BRONZE QUEEN (Breeder)

Beautiful bronze and buff shade not found in Darwins.

## DARWINS MIXED

A well blended mixture of the better known named sorts.



---

Postpaid Prices on All Tulips Listed Above

**6 for 55c; 12 for \$1.00; 50 for \$4.00**

NOTE: Owing to the shortage of all tulips, especially the reds, we suggest that we be given the privilege of substituting if necessary.

---

## Mixed Tulips for Mass Planting

This special mixture contains many varieties and colors. An outstanding value that will meet approval everywhere. **Special Price: 50 for \$2.00; 100 for \$3.75.**



# DAFFODILS AND NARCISSUS



## KING ALFRED

3 for 35c; 6 for 60c; 12 for \$1

In truth, a king among daffodils. A huge trumpet and perianth — often measuring four inches across.

## EMPEROR

3 for 30c; 6 for 50c; 12 for 90c

Before the advent of King Alfred, this was the finest all-purpose daffodil. The perianth is primrose with a stocky trumpet of darker yellow. It is still unexcelled for naturalizing, being superior for that purpose to King Alfred.



## ALBUS PLENUS ODORATUS

3 for 25c; 12 for 85c

Famous as the gardenia-flowered narcissus and indeed a striking variety. Pure white flowers of almost exactly gardenia form and shape, with a fragrance unequalled in any other narcissus, and rivaling the true gardenia in intensity. Blooms very late. Plant in moderate shade and water well to prevent flower buds from drying up in late spring heat.

## GLORY OF LISSE

3 for 25c; 12 for 85c

Pure white perianth with yellow cup edged red. Forcer.

## VON SION

3 for 20c; 12 for 60c

Pure double golden yellow daffodil. A good forcer. Still a spring favorite.

## PAPER - WHITES

(*Polyanthus Narcissus*)

Unexcelled for forcing indoors, growing easily in pebbles and water. Even a single bowl of half a dozen bulbs will brighten an entire room, giving off a sweet, intense fragrance unequalled by any other winter bulb.

## PAPER-WHITE GRANDIFLORA

4 for 25c; 12 for 65c

Pure white flowers borne in clusters that often contain fifteen to twenty florets.

## GRAND SOLEIL D'OR

3 for 20c; 12 for 65c

Bright orange-yellow, with even deeper orange cups, and even spicier fragrance. Best for pot culture.

## CHINESE SACRED LILY

10c each; 3 for 25c; 12 for 75c

Showy white flowers with yellow cups. Suitable for water culture. Large bulbs.

## MIXED NARCISSUS

### RED-CUPPED NARCISSUS

25 for \$1.00; 50 for \$1.75

A splendid mixture of red-cupped sorts. Fine for naturalizing or for planting singly.





rock-bottom price for general garden display purposes, we recommend these fine, well balanced mixtures.

## DUTCH IRIS MIXTURE

A well-balanced mixture, mostly shade of blue, but with some yellows and whites.

**Special Price: 50 for \$1.50; 100 for \$2.75**

## ST. BRIGID ANEMONE BULBS

A fine mixture of double-anemone bulbs of good blooming size.

**Special Price: 25 for 90c; 50 for \$1.75; 100 for \$3.25**

## GIANT MIXED RANUNCULUS (see illustration above)

Beautiful double and semi-double buttercup-like flowers in an amazing variety of bright colors and shades.

**Special Price: 25 for 85c; 50 for \$1.65; 100 for \$3.00**

## GARDEN COMPOST MAKER

For only a few cents per hundred pounds, you can make your own fertilizer. Use old weeds, lawn clippings, or any other vegetable refuse with **Compost Maker** and you can have high grade humus containing nitrogen, potash, phosphorus and all the other elements necessary to build up your soil and supply the necessary fertilization.

Miller's Compost Maker sells as follows:

**5-lb. Pkg. (enough for average city lot) 79c**

**25-lb. Pkg. \$2.50**

**50-lb. Pkg. \$4.50**

## FINEST DUTCH IRIS

One of the easiest and most satisfactory bulbs that do especially well in the Puget Sound area. Should be planted in October and November.

### WEDGEWOOD

3 for 20c; 12 for 60c

A large clear light blue. Very early. A good iris for forcing.

### IMPERATOR

3 for 20c; 12 for 60c

Dark blue of large size. Always popular. The best late blue.

### YELLOW QUEEN

3 for 20c; 12 for 60c

Standard and falls golden yellow. Tall stems. Very early and popular yellow.

## SPECIALLY PRICED MIXED BULBS

For those who wish to buy a quantity of blooming-size bulbs at a





# F R U I T T R E E S

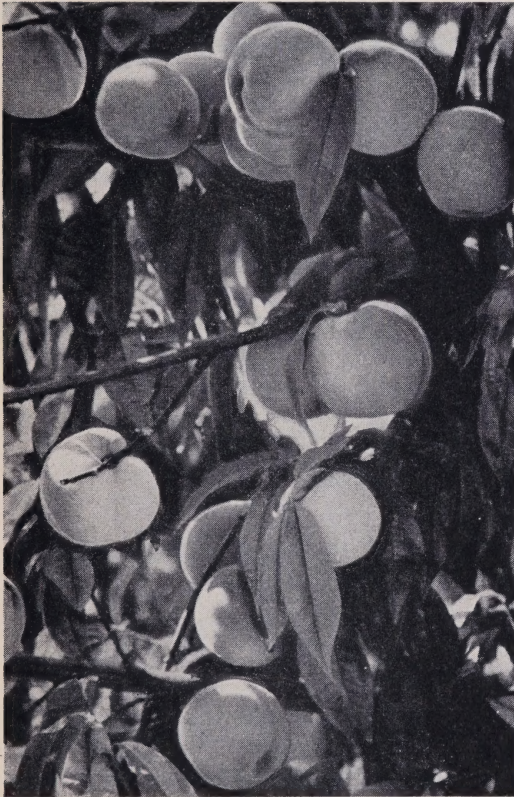
The trees offered for sale here are the best that can be purchased anywhere. They are all young, strong, sturdy trees not more than two years old; 5 to 7 feet high. Grown for us in the Pacific Northwest. Unless we receive instructions to the contrary, they will be properly pruned and prepared for planting before being packed and shipped.

## PEACH

We have at last succeeded in getting peaches which we feel will become the outstanding varieties for this area. One should remember that with the peach, fruit is borne on the second-year wood and pruning to keep the tree open for light and to produce the correct amount of bearing branches is necessary. So also is spraying with a 1-to-10 mixture of lime sulphur to prevent leaf curl. To get a healthy tree and good fruit you must spray and prune.

 **VEDETTE**—A yellow roundish freestone, weeks earlier and highly recommended by nurserymen for its hardness and quality. One of the very best for the Puget Sound area. **\$1.50 each.**

 **GOLDEN JUBILEE**—Fine early yellow freestone that gives excellent results in the Northwest.



## APPLE

**CRIMSON BEAUTY** — Very best early. Red skin.

**YELLOW TRANSPARENT**—Earliest in list. A summer cooking apple. Yellow skin.

**GRAVENSTEIN** — Slightly earlier than King. Best apple for eating, sauce or pies. Keeps well.

**RED GRAVENSTEIN**—Much the same as regular Gravenstein except red skin.

**KING**—Later than the Gravenstein. One of the best for baking and eating.

**RED DELICIOUS**—Excellent eating apple for late fall and winter.

**WINTER BANANA**—Fine keeper and good flavor. Heavy cropper.


**TRANSCENDANT CRAB**—Large, fine-flavored fruit.

## PEAR

**GORHAM** (sold out).

**BARTLETT**—Large and sweet; fine for canning.

**CAYUGA** (sold out).

 **BUERRE BOSCH**—Best keeper. Fine flavor.

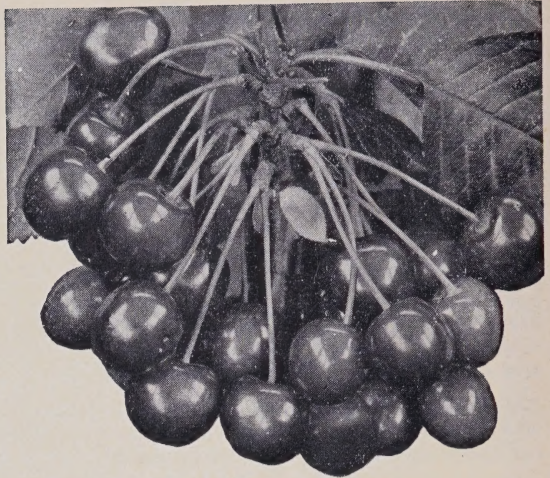
---

## PRICE OF FRUIT TREES . . . . . \$1.25

All fruit trees are uniformly priced except where otherwise noted. Our stock is extra heavy grade, free from disease and especially selected for you. All trees will be pruned before shipment. Be sure to add sales tax.



# FRUIT TREES



## PLUM

BRADSHAW—Deep red skin . . . golden flesh.

BURBANK—Cherry-red skin . . . golden flesh.

DUART<sup>E</sup>—Large purple crimson. Flesh red. Excellent flavor.

DATE PRUNE—Small, very sweet.

ITALIAN PRUNE—A fine, all-purpose prune. Purple skin, yellowish flesh.

## CHERRY

BING—Fruit large, dark and sweet. Best for shipping or market.

LAMBERT—Fruit very large, heart-shaped, dark, firm and sweet. 12 to 15 days later than Bing. Best late-market or eating cherry.

CENTENNIAL—Like Royal Anne but better.

DEACON — A fine pollenizer. Large, black and sweet.

BLACK TARTARIAN—A good early pollenizer for Bing, Lambert, Royal Anne or other cherries.

LATE DUKE—Large, dark red juicy fruit.

MONTMORENCY—Medium size, dark red, good quality. Trees small. Best for canning or pies.

## APRICOT

TILTON—A large, fine fruit, slightly compressed. Firm, yellow and parts readily from the stone.

CHINESE—An excellent variety for this locality.

---

---

**PRICE OF FRUIT TREES . . . . . \$1.25**

All fruit trees are uniformly priced except where otherwise noted. Our stock is extra heavy grade, free from disease and especially selected for you. All trees will be pruned before shipment. Be sure to add sales tax.





## NUT TREES

FRANQUETTE WALNUT \$2 ea.  
Best for Western Washington.  
Very scarce. Large trees.

FILBERT or HAZEL NUT

BARCELONA \$1 ea.  
Large, round, self-husking nut.  
One of the best.

DU CHILLY

\$1 ea.

Large, long nut of superior quality. A good commercial variety.  
(NOTE: Two varieties of Filberts should be planted for proper pollenization.)

---

## STRAWBERRIES

These are the five most suitable varieties for the home garden.

CORVALLIS—A recent introduction. One of the best.

DORSETT—New early heavy bearer. Berries large. Good shipper.

NARCISSA—Extra early sweet sort. Non-acid. Medium size.

RED HEART—A popular canning and freezing sort. Holds its color best of any sort.

Prices Quoted are for Postpaid Shipment

12 for 40c; 25 for 75c; 50 for \$1.25; 100 for \$2.00

ROCKHILL—One of the best of the everbearers. Very few runners. Excellent flavor. Large size. Heavy bearer. (Supply limited.)

12 for \$1.00; 25 for \$1.85; 50 for \$3.70; 100 for \$7.00

### SPECIAL HOME GARDEN COLLECTION

125 Fine Strawberry Plants (value \$4.85) \$4.00  
(25 each of all five varieties.)

(NOTE: Dry weather has retarded root development of strawberry plants this year. Orders will be booked in order of receipt and shipment made when the plants are best for transplanting.)

# B E R R Y P L A N T S



## OLYMPIC BERRY

This is the finest of all the vine berries. Large fruit; no seeds; high quality. Flavor is outstanding. High in sugar and iron content.

**Two Large Plants for \$1.00 Postpaid**

(Grown only by Olympic Berry Farm, Vashon, Washington)

## BOYSENBERRY

A blend of blackberry, Loganberry, and raspberry. Better than any of its parents. Berries are large and of fine flavor. Very hardy and a heavy bearer. **2 for 35c; 6 for \$1.00; 100 for \$12.50.**

## LOGANBERRY

Well known, tart, red berry used for jams, jellies and pies. One-year, No. 1 tips. **2 for 35c; 6 for \$1.00; 100 for \$12.00.**

## THE NEW NECTARBERRY

This is one of the best of the new berries for freezing, for pies, jellies or jams. Berries large, sweet and fine flavored. One-year, No. 1 tip roots. **2 for 45c; 6 for \$1.25.**



## RASPBERRIES

For the home garden, these two berries are definitely the very finest that can be grown.

### WASHINGTON

10 for \$1.00

Best variety for preserves or canning. Round fruit like an improved and larger Cuthbert.

### TAYLOR

10 for \$1.00

A very handy new variety that does not cane freeze. Quality very good. An excellent canner.

### LLOYD GEORGE

10 for \$1.00

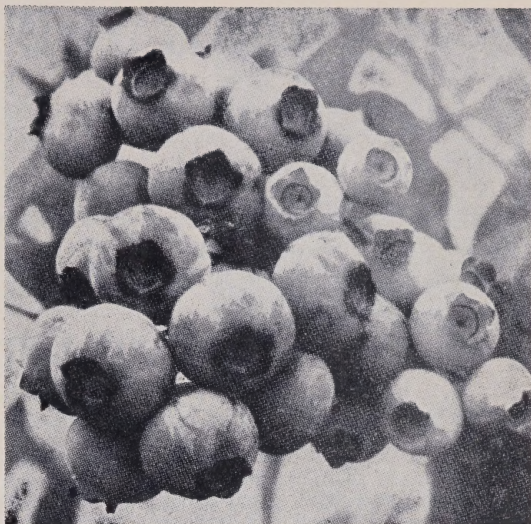
Fine flavor, very sweet, long fruit (as large as a Loganberry).

(NOTE: The price for all berries on this page includes packing and postage.)

★ *Washington Residents Please Add 3% Sales Tax* ★



# PLANTS and BERRIES



## ASPARAGUS Roots

Asparagus thrives best in low, moist places. 25 to 30 plants should supply the average family, but they do best three years after planting.

**GIANT WASHINGTON** (Rust-resistant) — Two-year roots. **12 for 30c; 25 for 50c; 100 for \$1.75.**

## HORSERADISH Crowns

Grow your own horseradish.  
**4 Crowns for 45c; 12 for \$1.25**

## RHUBARB Cuttings

**SOLLY'S CHOICE** McDONALD'S SWEET—A new variety that requires less sugar than any other variety. Unsurpassed for pies and sauce. **2 Cuttings for 85c; 6 for \$2.25.**

## GRAPES

- |  |                |
|--|----------------|
| <b>GOLDEN MUSCAT</b><br>Fruits large, pale amber, sweet Muscat flavor.                           | <b>75c ea.</b> |
| <b>ISLAND BELLE (BLACK)</b><br>Large, compact clusters. Juicy and of good flavor. Good shippers. | <b>45c ea.</b> |
| <b>CONCORD (PURPLE)</b><br>A popular variety. Fine for jelly, juice and jam.                     | <b>45c ea.</b> |
| <b>PEARL OF CSABA (WHITE)</b><br>Medium size, spicy, slightly Muscat flavor.                     | <b>60c ea.</b> |

## BLUEBERRIES

While blueberries are comparatively new and require acid soil and plenty of moisture as the berries are growing, they are becoming more and more in demand. This year we are offering Hybrid Seedlings only, as they are lower in price and are excellent producers. Two bushes are needed for best pollenization. Prices delivered:

**3-year (bearing) size: 2 for \$1.75, 5 for \$4.00**  
**2-year size: 2 for \$1.35, 5 for \$3.00**

## CURRANTS

**PERFECTION**—Finest large red; very productive. **2-year, each 35c, 12 for \$3.00.**

## GOOSEBERRIES

**OREGON CHAMPION**—Berries medium size, round, greenish-white, good quality.  
**2-year, each 35c, 12 for \$3.00**

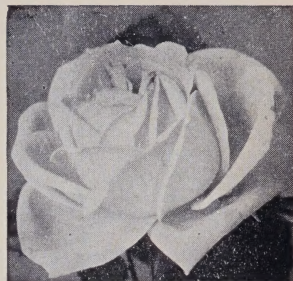
---

★ *Washington Residents Please Add 3% Sales Tax* ★



# R O S E B U S H E S

From the hundreds of lovely roses, Cecil Solly has selected these as being the ones that are best for this district, most free from troubles and a good color range. They are all strong, sturdy Washington Grade 1 bushes, which have outstanding colors, foliage, form and trouble resistance. All are two years old.



## New Roses for Your Garden!

### APRICOT QUEEN (Pat. No. 464)

\$1.25 ea.

A lovely combination of colors of orange and apricot at the base of the petals, merging to salmony-rose and phlox-pink in the fully developed bloom. The bud is long pointed. A good strong grower, with handsome, leathery foliage which serves as a splendid foil to the perfectly formed buds and open bloom.

### HEART'S DESIRE (Pat. No. 501) (H. & S.)

\$1.50 ea.

Superb blooms of a pure, even shade of luminous red, without any shadings of maroon. It is sunproof, even in the hottest weather. Exceedingly vigorous growth, free blooming, an intense fragrance.

### MME. CHARLES MALLERIN (Pat. No. 409) (Mallerin)

\$1.50 ea.

An outstanding sensation, with flowers that stand erect on extra strong stems. One of the earliest roses to bloom. The color of the open flower is orange, overlaid with flame. The large buds are a deep glowing orange.

### SANTA ANITA (Pat. 539) (H. & S.)

\$1.00 ea.

Perfectly formed, long pointed buds unfold into flowers of clear silvery pink. Mildly fragrant. Quite free-blooming.

### CLIMBING MRS. SAM MCGREDY (Pat. 394) (Western Rose) \$1.00 ea.

A climbing sport of the well-known hybrid tea, Mrs. Sam McGredy. Flowers are of a beautiful copper-orange color, flushed with Lincoln-red on the outside of the petals. Delicately perfumed. Glossy, bronzy green foliage.



### RUTH ALEXANDER (Pat. No. 178) (Wilber)

\$1.25 ea.

A beautiful, intensely fragrant climber. Flowers are large, high-centered, yellow at base, merging into orange and peach-red at petal tips. Glossy foliage.

## COLLECTION PRICES

All Six for Only \$6.30

One Each of the Four Bush Roses (Retail Value \$5.25), Our Special Price \$4.40

**"ORTHO" ROSE SPRAY KIT.** A special combination kit containing a 2-oz. bottle of EXTRAX Insect Spray and a 2-oz. bottle of GREENOL Liquid Fungicide, together with an illustrated circular on Rose Pest Control. Makes 12 gallons of combination spray for simplified control of rose insects and diseases. Complete Rose Spray Kit, Postpaid, \$1.00.



# SEVEN GORGEOUS PEONIES



There is no flower that will give such lasting satisfaction with less care or pest bother than peonies. The giant blossoms, many of them fragrant, are best in June. Once planted they need not be moved for years. Fertilizer, freedom from weeds or grass and a reasonable amount of moisture are all that are required.

## AVALANCHE 8.7 (Crousse)

85c ea.

A choice creamy white, coming into bloom late in the season. The flower is large and compact, with a collar of creamy white petals surrounding a center of delicately tinted lilac-white petals occasionally edged carmine. A choice cut flower and also a fine show flower.

## ELLA CHRISTENSEN 9.0 (Brand)

\$1.50 ea.

An irresistibly appealing new pink of the large size, with narrow serrated petals. One of the finest pinks yet. Lighter than Walter Faxon. A splendid flower both in the garden and as a cut flower.

## FELIX CROUSSE 8.4 (Crousse)

75c ea.

A deep rose-red showing no stamens. Consists of a central bomb of incurved petals surrounded by broad, prominent guard petals. A good all-purpose late red.

## KELWAY'S GLORIOUS 9.8 (Kelway)

\$1.35 ea.

A fine mid-season lacy white that fully deserves its high rating. The flowers are large, rose type, with long lacinated petals. Plant is medium tall, upright, with strong stems that hold the lacy flowers erect. A really fine white.

## LONGFELLOW 9.0 (Brand)

\$1.20 ea.

One of the most popular red peonies because of its distinct, fadeless color and general dependability, both for cutting and garden decoration. Comes into bloom early mid-season. The plant has excellent foliage and strong, stiff stems. The flower is a bright crimson and is a showroom winner.

## MONS. JULES ELIE 9.3 (Crousse)

75c ea.

An immense self-colored flesh-pink, shading a trifle deeper toward the base of petals. Great prominent broad guard petals enclose an immense ball of incurved petals of the same color, all covered with an intense silvery sheen. It looks more like a huge chrysanthemum than a peony. The plant is medium tall with strong stems. An early bloomer with pleasing fragrance.

## WALTER FAXON 9.3 (Richardson)

\$1.00 ea.

The most vivid of all pinks, the only "real pink," as someone has said. A remarkable flower at its best in the showroom. The flowers are of medium size, attractive in form, and mildly fragrant. In the showroom it tops them all.

## COLLECTION

\$6.00 Postpaid

One each of the above Seven Wonderful Peonies (\$7.40 value) only \$6, postpaid.

---

(NOTE: Plant peony roots with eyes two inches below the surface. Deep plantings do not bloom well.)

